



Welcome to Walton



Diverse
Academies

Welcome

I am delighted to welcome you to Walton and that you have chosen to spend the next stage of your education with us. I am confident that you will have a highly challenging and hugely positive experience and enjoy excellent outcomes.

Our most recent results were phenomenal and place us in the top 5% of all schools nationally, demonstrating that we have the expertise to allow all students to fulfil their potential and achieve their dreams. We strive to be the best secondary school in the country and are committed to continually improving our offer and the quality of our provision.

We fundamentally believe that every student should achieve their full potential and all staff are committed to ensuring this happens. Our academy is underpinned by our core values of ‘Excellence, Courage, Commitment and Ownership’. We consider these to be integral to our students’ success and wellbeing. Alongside a commitment to academic excellence, students are expected and encouraged to become fully involved in Walton life.

Developing character is hugely important to us too – we want our students to be strong of mind, will and heart, and we offer a wide range of enrichment opportunities to ensure this happens.

All students will follow our ‘LORIC’ curriculum that develops leadership, organisation, resilience, initiative and communication skills in readiness for the world of work. At Walton our culture of kindness is of equal importance to academic success – we want our students not only to be successful but leave with a robust moral compass.

Our personalised approach and rich curricular and extra-curricular offer make Walton a supportive and very positive place to learn.



W. Teece

Mr Will Teece
Head of School

Our core values

OWNERSHIP

Taking responsibility
Control of your destiny
You are responsible for the talent that has been entrusted to you

EXCELLENCE

Surpasses ordinary standards
Nurtures a culture of excellence

COMMITMENT

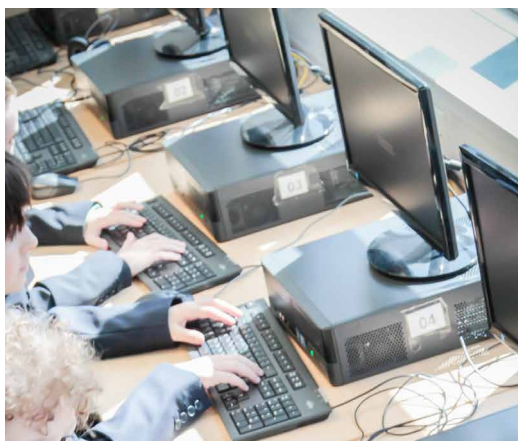
Dedication, taking responsibility
Commitment is pushing yourself when no-one else is around
Commitment is the glue that bonds you to your goals

COURAGE

The ability to do something that you know is difficult
Courage doesn't mean you don't feel fear – it means you don't let fear stop you



Dedication, taking responsibility
Commitment is pushing yourself when no-one else is around
Commitment is the glue that bonds you to your goals



The ability to do something that you know is difficult
Courage doesn't mean you don't feel fear – it means you don't let fear stop you

High performance, high expectations

Progress

Walton is a high performing academy where every student is encouraged to achieve their full potential.

We are proud of our record of academic success and our students' achievements. The Department for Education's 2018 Progress 8 results placed Walton as the top school in Grantham, the top non-selective school in Lincolnshire, and within the top 5% of schools nationally.

Teaching and learning

At Walton your child will receive high quality teaching and learning, and exceptional pastoral care.

We expect the best from both our staff and students, and work to the best of our ability to form a strong community that we can all be proud of. Students are supported all the way through Walton, including one-to-one tuition, revision sessions, study skills sessions and careers interviews with our on-site advisor.

We are here to support students in deciding what study options, career pathways and university courses are best suited to them. We also recognise our students' achievements at our annual celebratory evening. We invite special guests to inspire and motivate our students, staff and parents.

A full curriculum

All students will follow our LORIC curriculum: leadership, organisation, resilience, initiative, and communication. These skills are intended to prepare students for the world of work.

We offer a rich and varied curriculum in Year 7 and Year 8, in the core subjects of English, mathematics and science, as well as a range of other subjects such as philosophy and ethics, drama, dance and music, the visual arts, humanities and modern languages.

In Year 9, students then specialise in four subjects, in addition to their core studies, following a wide range of inspiring courses such as triple science, health and social care, dance, drama, humanities, philosophy and ethics, and food and nutrition.

We ensure that students can follow a variety of combinations of courses, including access to the English Baccalaureate (Ebacc).

We have a dedicated team of staff who work closely with students who may need more one-to-one tuition in order to build their confidence in literacy and numeracy.

We also cater for our gifted and talented students by running trips to university campuses to give them the chance to see higher education in action. Other events include writing workshops, Latin, and visiting scientists and performers.

“Pupils have made accelerated progress across the curriculum...”

Ofsted, March 2019

The 3Rs

At Walton, we have high standards and these are matched by equally high expectations in terms of student behaviour and attitude.

All students are expected to adhere to the Walton 3Rs:

Ready
Respectful
Responsible

Character education

In addition to exceptional teaching, we take a holistic approach to each student's education with a view to developing well-rounded, resilient, and responsible citizens who are prepared for life ahead.

We are a member of the PiXL network, and are one of only ten secondary schools nationwide chosen to be a beacon of excellence for the 'Them and Us' programme. Through this programme, we instil the qualities of kindness, character building and respect throughout the student body.

The intention is that every student who becomes aware of these issues, could make a difference locally, both in the academy and the community. It has the potential to lay the foundation for a change in society itself where 'having a mind to be kind' might become the norm.

Support and guidance

Pastoral care

At Walton, we pride ourselves on the pastoral care offered to students.

Our pastoral system is operated through our four houses: Belton, Belvoir, Burghley and Irnham. Houses are run by house leaders and form tutors, enabling students to quickly access a support network of staff who will be familiar to them throughout their time at the academy.

We use vertical tutoring, designed to allow students to make friends in all year groups. Tutors meet with their tutees daily. There is an opportunity to get to know each other, talk about issues, set targets and discuss progress.

Wellbeing

Throughout the academic year, we deliver a complete safeguarding and wellbeing curriculum to students through computing lessons, tutorial time, assemblies, and 'Life Skills' and 'Choices' days.

The curriculum includes e-safety, the importance of sleep, wellbeing, healthy relationships and road safety, to name just a few of the topics.

Leadership

Supportive and dedicated staff are central to the running of Walton. Under the leadership of the Head of School, the members of the leadership team have individual responsibilities for key areas such as teaching, learning and assessment, outcomes, personal development, behaviour and welfare, and post 16.

Other managers consist of associate leaders, heads of faculty and heads of house. Again, these have separate specialisms and there is a constant dialogue between faculties to ensure that the academy operates as a cohesive unit.

Each faculty is made up of well-qualified subject teachers who each have a passion for their subject.

Student leadership

We encourage students to support one another during their time at Walton, and ensure our students have a voice.

We offer a number of opportunities for students to take on leadership roles, such as Head Girl and Head Boy, Deputy Head Girl and Boy, and as ambassadors for kindness, STEM, sports, the environment and to champion mental health.

Students can also join the Student Council to help shape and influence activities at the academy.

Careers guidance

At Walton, we are proactive in ensuring all students engage with a comprehensive programme of careers education, information, advice and guidance (CEIAG). Importantly, this meets and exceeds Department for Education professional standards of practice, is catered to individual students and is impartial. It is based on a partnership with students and their parents or carers.

Our careers programme starts right from Year 7 and continues into sixth form.

In Year 7 students will receive:

- | An introduction to careers pathways and skills development
- | Access to impartial careers advice
- | An individual Fast Tomato account – online careers database (fasttomato.com)
- | Access to employers and universities through the Walton Careers Fair



Enriched learning

At Walton we have a tradition of offering high quality opportunities and activities beyond the curriculum.

There is an extensive menu of extra-curricular activities on offer, including exceptional arts and sporting provision with opportunities to take part in workshops and field trips. We also offer students the chance to experience different cultures and experiences through our range of national and international trips and visits to educational venues linked to curricular areas.

Clubs

Our lunch and after school clubs cover a diverse range of activities to help students develop their skills and talents. These include dance, musical theatre, maths problem-solving, board games, table tennis, badminton, writing, photography, the academy orchestra and many more.

Trips and visits

Our students take part in a range of visits, such as:

- | Theatre trips
- | Visits to exhibitions and museums
- | University visits
- | Residential trips
- | Overseas trips
- | Sports fixtures
- | STEM visits
- | Debating Society
- | Visits to planetariums and the Houses of Parliament
- | Voluntary and community outreach

Duke of Edinburgh's Awards (DofE)

We are proud to be part of the DofE scheme and offer students the opportunity to achieve the bronze level award. These awards are highly regarded by universities and employers alike. Taking part in the DofE awards provides our young people with essential life skills, leadership skills and training, volunteering opportunities and team working skills.

STEM enrichment

The academy provides a wide range of opportunities for students to explore STEM activities, such as visits to planetariums, workshops with trainee astronauts, and attending the Royal Society Christmas Lectures. STEM clubs such as the CREST award and High Flyers club are always popular and well attended by students in all year groups.

Charity and community work

Our students are encouraged to support local and national charities. Each year, we raise and donate money to numerous worthy causes, including cancer charities, Red Nose Day, Children in Need, and local charities, such as hospices and community organisations.

Speakers are often invited in to present their personal experiences to our students who then raise funds for these specific good causes. Over the years, Walton students have raised many thousands of pounds for these fantastic charities.



“Expectations are very high across all aspects of the school’s provision and... demonstrate an unwavering determination to secure the best possible outcomes for pupils, both academically and in their personal development and welfare.”

Ofsted, March 2019



Exceptional facilities

Our facilities ensure a high quality educational experience for all students.

Each faculty has a range of IT facilities and we have standalone ICT suites. The Learning Resource Centre is well stocked with the latest books. It is equipped with a bank of computers that are used both for lessons and for independent study during breaks, lunchtimes and after school.

We have two dedicated dance studios, music technology rooms and practice rooms. Our theatre has professional equipment including staging and lighting, enabling us to put on performances renowned for their professional quality.

Our indoor and outdoor sports facilities are well equipped and are invaluable spaces for the variety of sports available at Walton.

We also have a conference room and conferencing suite which are used by older students for mentoring, 1:1 tutoring and independent study.

Walton's emphasis is on the best facilities for our students which support both study and personal development. Visitors are always impressed by how well maintained our site is and our calm and productive environment.



Sixth form provision

We have a dedicated sixth form centre at the academy, housed in its own building.

The high expectations and inclusive ethos at Year 7-11 is embraced in post 16 study, whilst encouraging independence.

We have a hugely talented team of teachers relentlessly monitoring the high quality of lessons, as well as a caring pastoral team who help students make those all-important decisions about the future.

Teachers guide students through their chosen subject pathways and a new way of studying, in order that they become more independent and self-reliant, and are prepared for life ahead.

Don't just take our word for it...

“Walton has helped me to become more confident and aspirational.”
Year 11 Student

“There are so many amazing clubs to join here.”
Year 8 Student

“I've made so many new friends since starting at Walton.”
Year 7 Student

“Our teachers make lessons really interesting and fun at Walton, they really care about what we achieve.”
Year 9 Student

“Teachers have a personal interest in the students and know their strengths and weaknesses.”
Year 7 Parent

“I appreciate the support and praise for my child and for the encouragement they receive to achieve their best.”
Year 9 Parent

“Walton rewards hard work and achievement, very encouraging. They develop the whole child as well as the academic aspects.”
Year 9 Parent

“We would like to thank you for all your hard work and encouragement, which has contributed to the outstanding results my child achieved.”
Year 11 parent

“My daughter is very happy at Walton, she has a great group of supportive friends and teachers.”
Year 8 Parent

“Teachers are enthusiastic, supportive and encouraging and create the environment in which our daughter is thriving.”
Year 7 Parent



Admissions

Welcoming new students

It is a big step starting a new school, especially in Year 7.

The transition to Walton has been designed to be as smooth as possible. If your child is allocated a place here, they will be assigned to a vertical tutor group of 15-20 students, and will quickly develop friendships and form a team ethos. They will also be invited to Walton's Transition Week.

During Transition Week, students learn more about Walton by taking part in lessons and extra-curricular activities. Transition Week allows students to get to know each other and the staff who are going to be working with them. It is an exciting week and gives the students a real flavour of life at the academy.

How to apply

To apply for a place at Walton, parents and carers will need to submit an application to Lincolnshire County Council by the published deadline. The application process for Year 7 normally opens in August each year, closing in late October, with offers made to families in the following March.

Further details of how to apply can be found on the 'Admissions' section of our website:

www.walton-ac.org.uk

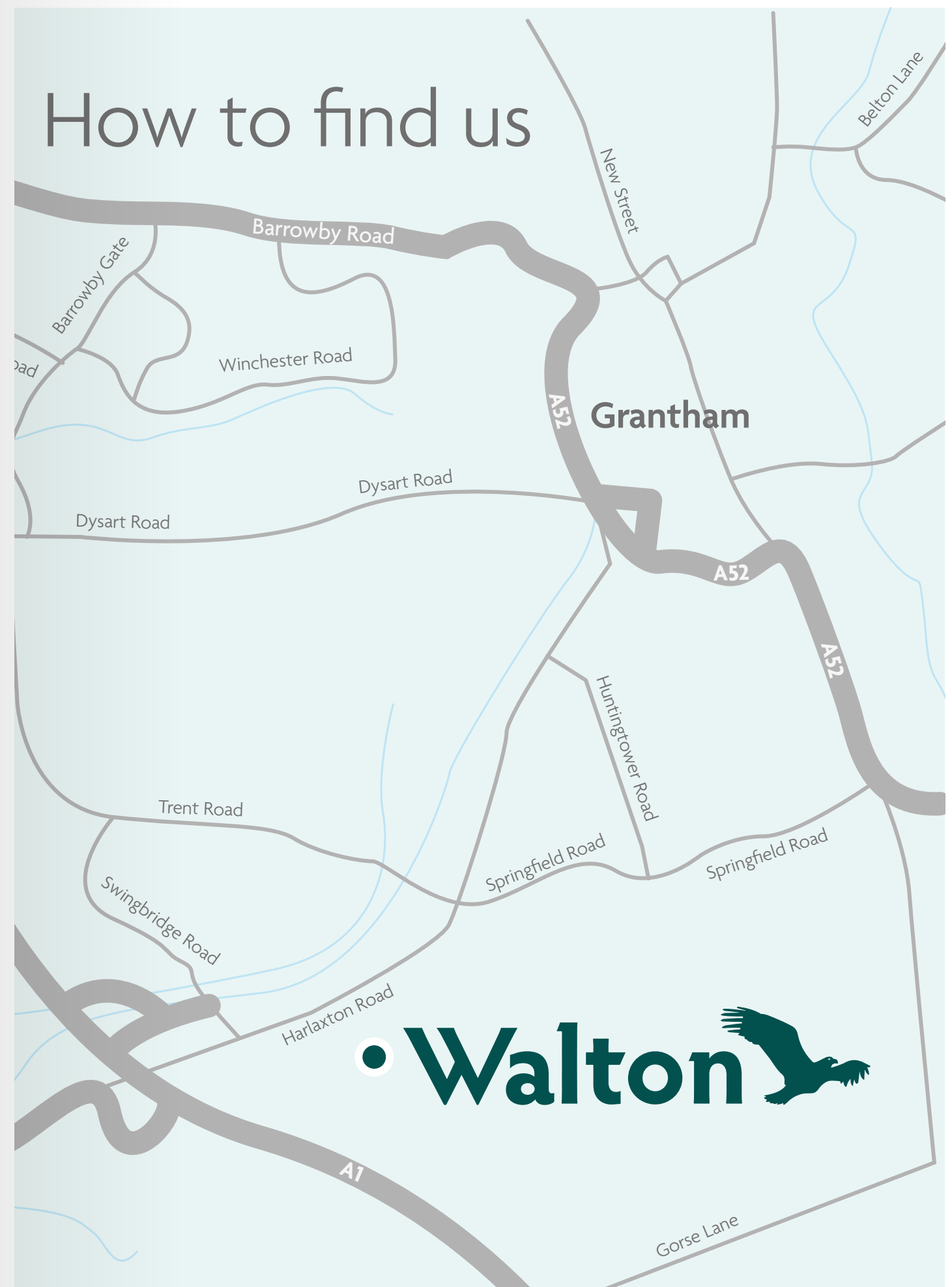
If you have any questions at all about applying to Walton, please do not hesitate to contact us:

Phone: **01476 563251**

Email: **enquiries@walton-ac.org.uk**



How to find us





Harlaxton Road | Grantham | Lincolnshire | NG31 7JR

Phone: **01476 563251**

Email: **enquiries@walton-ac.org.uk**

www.walton-ac.org.uk

Diverse Academies Learning Partnership is a partnership between the Diverse Academies Trust (Old Hall Drive, Retford, Nottinghamshire, DN22 7EA; registered company number 07664012) and the National Church of England Academy Trust (Annesley Road, Hucknall, Nottinghamshire, NG15 7DB; registered company number 07708713). Not for profit charitable trusts with exempt charity status, registered in England and Wales.