



POST 16

Part of  Diverse Academies



Lucy Cluley
Head of Post 16

WELCOME

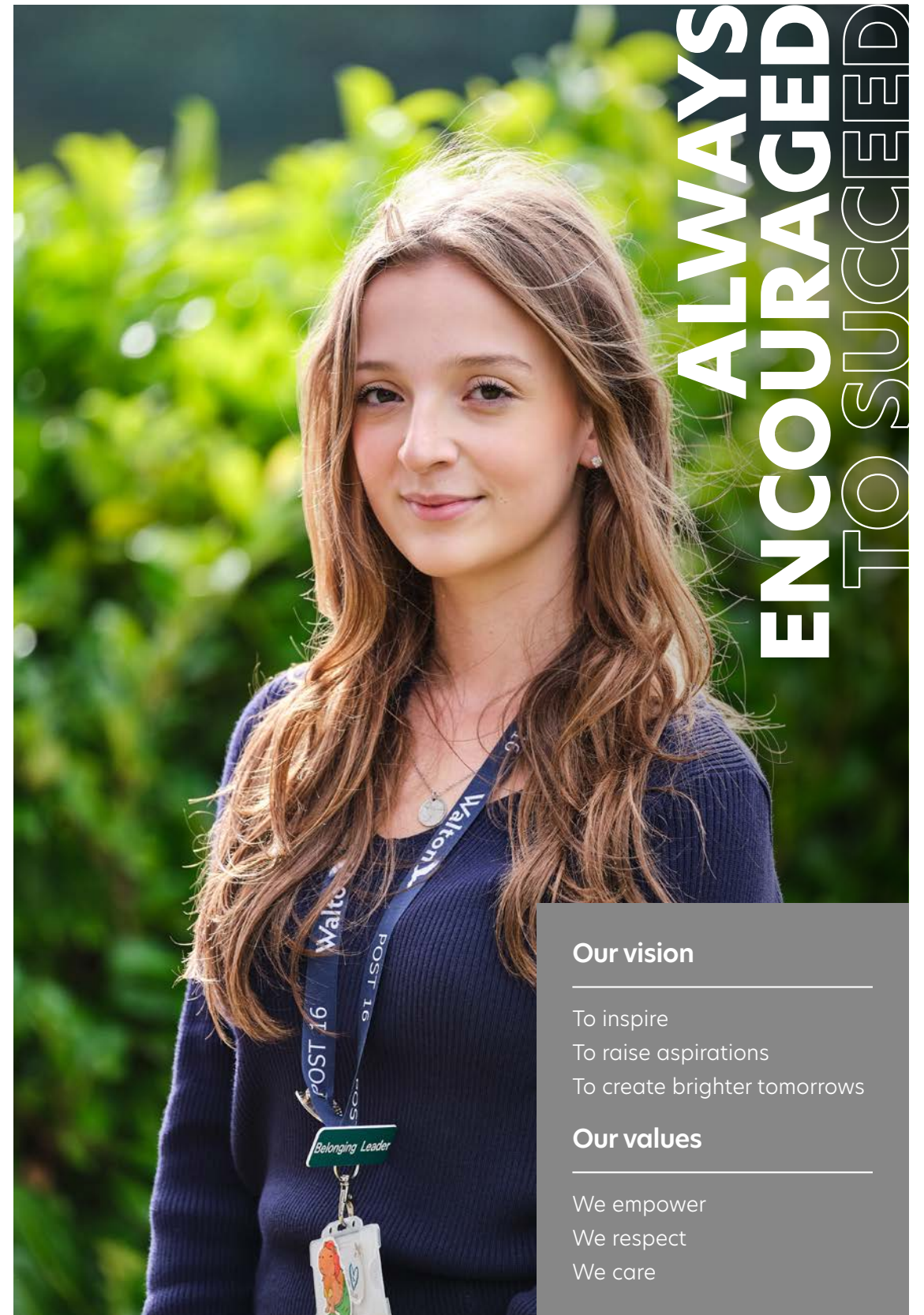
We are very proud of our Post 16 Centre and the fantastic results we have consistently achieved. At Walton Academy we pride ourselves on the support offered to our young people. From academic mentoring, careers advice and guidance, to an age relevant and bespoke tutor curriculum to support students on their journey here with us.

Our enrichment programme develops students in a variety of ways – self-confidence and leadership workshops designed by our arts co-ordinator, health and wellbeing sessions covering self-defence, plus a range of sporting activities to volunteering both in school and out in our community to give back to those who need help and support. This reflects our ethos of post 16 students becoming role models.

Students have a vast range of extracurricular opportunities they can get involved with – all to ensure our young people develop more than just their academic abilities whilst here with us. We provide all students with a bespoke programme of advice and guidance to inform future pathways, including higher education and apprenticeships.

Our careers officer is also available for one-to-one appointments to help students plan their next steps. Our dedicated post 16 team is relentless in ensuring an effective climate for learning to make sure that all students reach their full potential. We look forward to meeting you at our post 16 open evening.

VISION, VALUES AND ETHOS



Our vision

To inspire
To raise aspirations
To create brighter tomorrows

Our values

We empower
We respect
We care

ALLOWING STUDENTS TO SHINE AND REACH THEIR GOALS

Our sixth form offers an exciting, vibrant place of study. Post 16 students join a lively community, located within Walton's dedicated post 16 centre. This allows students a greater level of independence and freedom in their studies, preparing them for the transition to university or the world of work.



Developing well-rounded students

HIGHEST STANDARDS OF PASTORAL SUPPORT



Excellent teaching

WIDE-RANGING ENRICHMENT OPPORTUNITIES

STUDY
WITH US

TAKE A
CLOSER
LOOK



“

Walton Post 16
Centre has a great
community feel.

KEY FACTS



99%
PASS RATE

A*-A
GRADES
26%

60%
OF LEVEL 3 BTEC
GRADES TOP
DISTINCTION*
DISTINCTION

58%
A*-B GRADES



16-19 bursary fund
of up to

£1,200

27 A LEVEL AND BTEC
LEVEL 3 COURSES
ON OFFER

1 WEEK WORK
EXPERIENCE

TOP 10

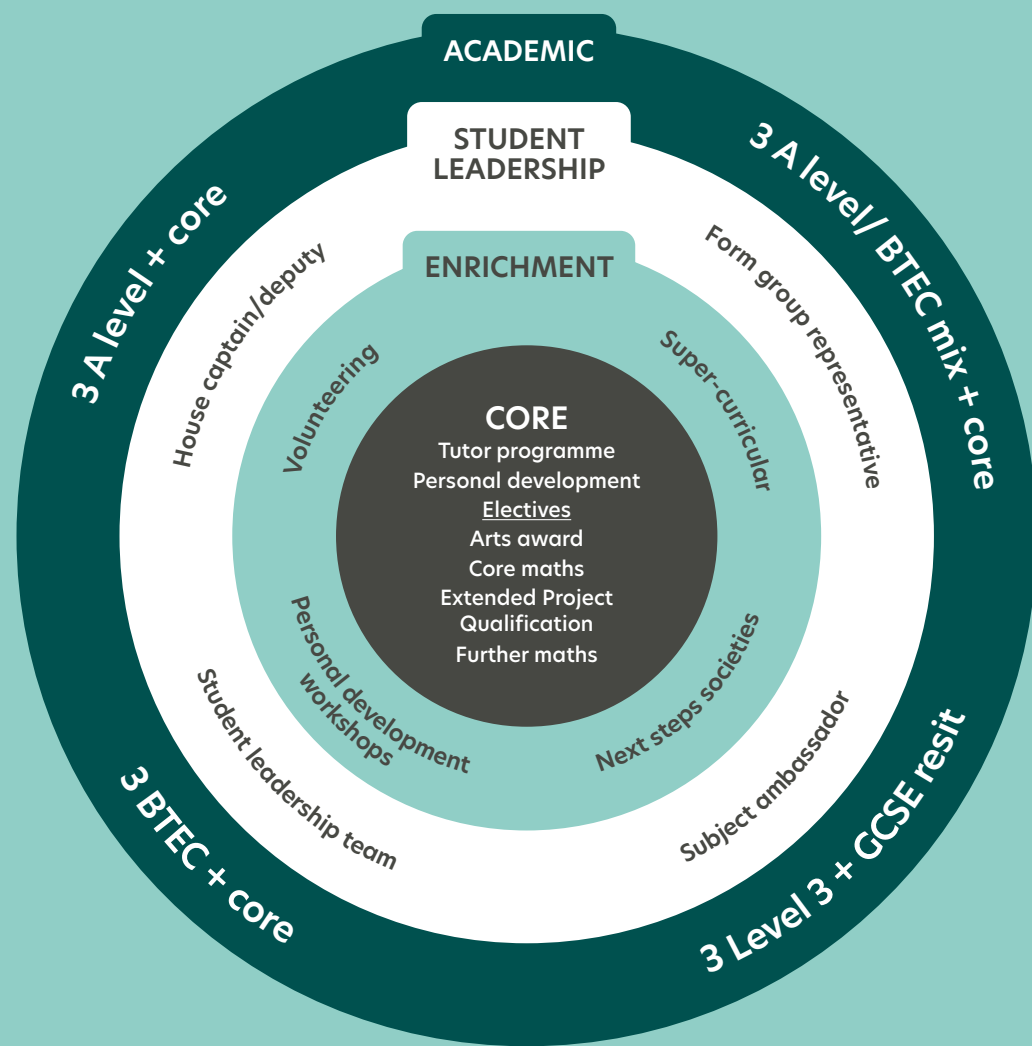
REASONS TO STUDY AT WALTON POST 16

- 1.** **WIDE RANGE OF A LEVEL AND BTEC LEVEL 3 COURSES**
- 2.** **Student voice and leadership opportunities**
- 3.** **Extensive extracurricular OPPORTUNITIES**
- 4.** **Purpose-built Post 16 Centre**
- 5.** **AMAZING FACILITIES**
- 6.** **Dedicated post 16 tutor team and peer mentors**
- 7.** **BESPOKE CAREERS PLANNING AND LIFE SKILLS DAYS**
- 8.** **Excellent pastoral care**
- 9.** **STRONG ACADEMIC RESULTS**
- 10.** **A warm and friendly community**

WALTON ACADEMY POST 16 CURRICULUM OFFER

At Walton Post 16 we are proud to offer a curriculum that goes beyond the classroom.

We ensure that all our students have a wide range of opportunities to develop not only academically but holistically. Our curriculum is designed to empower students far beyond the confines of traditional academics. Our approach is a testament to our commitment to nurturing well-rounded individuals ready to excel in both their educational pursuits and life beyond school.



Core programme

At the core of our post 16 experience is a comprehensive tutor programme, seamlessly incorporating the VESPA programme from A level Mindset. This invaluable resource, led by our specialist tutor team, equips students with the vital skills necessary for academic success and personal growth. Students also engage in an age-appropriate personal development programme that empowers our students to make positive decisions in their lives. Our students have the unique opportunity to select from a range of core electives, additional academic qualifications that not only bolster their UCAS points but also foster independence, academic writing competence, and research skills. This choice-rich environment ensures that every student tailors their educational journey to their individual aspirations.



Academic qualifications

Our post 16 academic curriculum allows students to choose options that suit their interests. We are always looking for ways to build our curriculum based on student feedback, for example by introducing languages, psychology and sociology. Students have the opportunity to choose a range of level 3 qualifications from A level to BTECs or a combination of both. At Walton Academy, our post 16 experience is more than an academic journey; it's a transformative path to becoming well-rounded, empathetic leaders who make a positive impact on our school and community.

Student leadership

We understand that education extends beyond the classroom. Walton Academy is proud to offer an array of student leadership opportunities, where our post 16 students play a pivotal role in shaping the school community. Under the guidance of the head of post 16, Miss Cluley, our students actively contribute to redesigning spaces like our common room, shaping policies, organising charity events, and championing positive mental health and well-being initiatives. Our post 16 students are not just learners; they are role models to everyone in the academy, inspiring aspiration and belonging throughout the school. As part of our energetic house system, run by dedicated post 16 students, house captains lead the charge, organising exhilarating house competitions, engaging in weekly lunch duties to connect with fellow students, and delivering motivational assemblies. They also manage budgets and social media accounts, honing leadership and organisational skills that will serve them well in the future.



STUDENT LIFE



“

I enjoy having more freedom and independence in sixth form.

INDEPENDENT THINKING

STUDENT VOICE



Life in our sixth form allows students more independence and freedom, including an array of enrichment opportunities to support learning and the development of life skills.

Performing arts productions



NEXT STEPS DAYS

POST 16
LEADERSHIP
TEAM



Mental health
ambassadors



STEM
opportunities



Trips and visits
programme



CHARITY
WORK



Self-defence
classes

FIRST-CLASS FACILITIES

“

The post 16 facilities at Walton are amazing.



Walton's purpose-built post 16 centre provides a modern and welcoming hub for our sixth form students. In addition to tutor rooms, you will have access to group and individual study and breakout areas, fully equipped ICT suites and laboratories, and a post 16 common room – perfect for relaxation and socialising with other students. Refreshments and snacks can also be accessed within the centre.



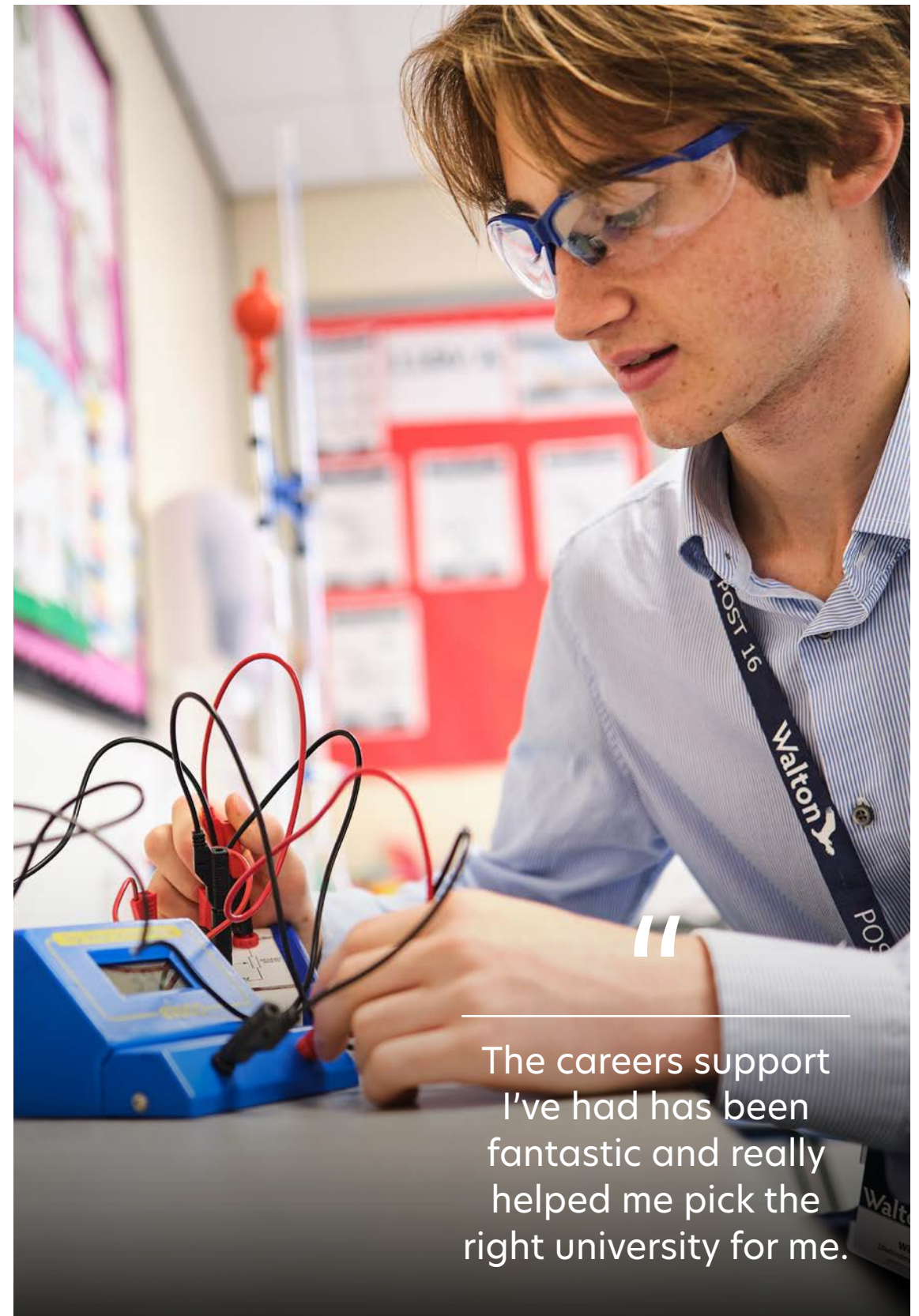
The post 16 learning environment also offers Walton students access to additional unrivalled facilities – the majority of which cannot be found at other post 16 centres:

- visual arts spaces for painting and drawing
- photographic studio with purpose-built dark room
- dance studio
- industry standard theatre with auditorium seating plus backstage lighting, camera and sound console

Our recently refurbished maths and science suites are located next to the post 16 centre for ease and convenience.



YOUR ONWARD JOURNEY



“

The careers support I've had has been fantastic and really helped me pick the right university for me.

Future pathways

SUPPORTING YOU EVERY STEP OF THE WAY AS YOU PLAN YOUR FUTURE PATHWAYS

UCAS

and university destinations support

Revision and exam preparation

Personalised careers advice

Preparing for apprenticeships

Interview practice and CV writing workshops

Access to Unifrog

Motivational careers masterclasses

Next steps days



www.theuniguide.co.uk



www.notgoingtouni.co.uk



www.unifrog.org



www.applytouni.com



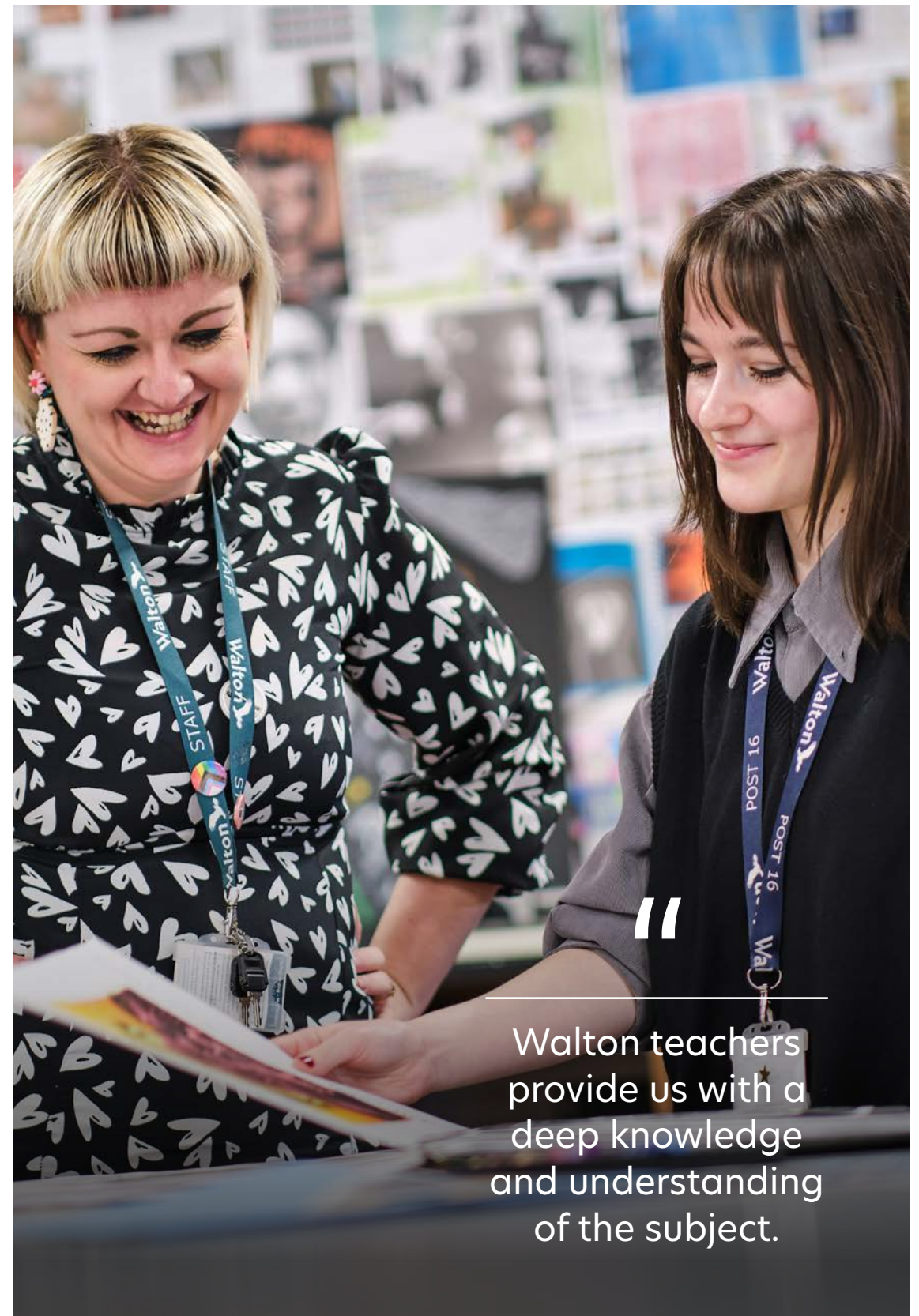
www.ucas.com

Student destinations

Just some of the leading Russell Group and top universities our former students have gone on to



YOUR STUDY OPTIONS



“

Walton teachers provide us with a deep knowledge and understanding of the subject.

Giving you a head start

The core programme

Post 16 students at Walton will study a core programme. This includes core electives that are additional qualifications that develop a range of study skills which promotes and fosters independent working.

Once students have chosen their core electives they will then choose three options across a wide range of A level and applied courses.

Arts Award

Level 3

Unlock your creative potential with Gold Arts Award level 3. This prestigious programme empowers you to explore, develop, and showcase your artistic talents. With a focus on both artistic skill and personal growth, it challenges you to dive deeper into your chosen art forms, whether it's visual arts, performing arts, or any creative discipline. You'll collaborate with experienced staff, expand your artistic horizons, and create a portfolio that reflects your artistic journey. As you embark on exciting projects, interact with professional artists, and share your creativity, you'll refine your artistic abilities while gaining invaluable leadership and project management skills. Gold, the highest Arts Award level, is worth 16 UCAS points, providing a significant advantage for university and job applications.

Entry requirements

Students should have a minimum of 5 GCSE grades (5 to 9) including maths and English language.

Examination board:

Trinity College London/
Arts Council England

Find out more at:

www.walton-ac.org.uk/sixth-form/courses/arts-award

Core maths

AS level

This qualification is designed to consolidate and build on your mathematical understanding at GCSE, as well as develop your mathematical understanding and skills further in the application of mathematics to authentic problems. You will gain a deeper competence in the selection and use of mathematical techniques used at GCSE and beyond, develop confidence in representing and analysing authentic situations mathematically and applying mathematics to address related questions and issues. You will also build skills in mathematical thinking, reasoning and communication.

Entry requirements

A minimum grade 5 at GCSE maths

Examination board:

OCR

Find out more at:

www.walton-ac.org.uk/sixth-form/courses/core-maths

Extended Project Qualification (EPQ)

EPQ

Unlock independent research and critical thinking with the Extended Project Qualification (EPQ). This unique opportunity allows you to explore a topic of your choice, guided by passion and curiosity. As an EPQ student, you'll develop vital skills in research, analysis, and presentation, preparing you for higher education and the professional world. Experienced mentors will help you craft a project reflecting your intellectual prowess and creativity. Whether you choose a deep dive into history, a scientific investigation, literary analysis, or a creative endeavour, the EPQ lets you explore your passions. It's your chance to demonstrate expertise, showcase originality, and stand out to universities and employers.

Entry requirements

Minimum of GCSE grade 5 in English or humanities

Examination board:

Pearson

Find out more at:

www.walton-ac.org.uk/sixth-form/courses/epq

Further maths

A level

Further maths is essential for many university courses and careers. This A level has been designed alongside deliverers of higher education to ensure it gives students the best possible chance to progress and realise their potential. This course will stretch and challenge even the most able mathematicians to prepare for a career in the STEM subject areas. You will also build skills in mathematical thinking, reasoning and communication.

Entry requirements

Minimum grade 7 GCSE maths

Examination board:

AQA

Find out more at:

www.walton-ac.org.uk/sixth-form/courses/further-maths

View our courses online
www.walton-ac.org.uk/sixth-form/courses





- Applied science
- Art, craft and design
- Biology
- Business
- Chemistry
- Children's play, learning and development (CPLD)
- Criminology
- Dance
- Drama
- English literature
- Food science and nutrition
- Geography
- Health and social care
- History
- Information technology
- Languages
- Maths
- Philosophy and ethics
- Photography
- Physics
- Psychology
- Sociology
- Sport

Applied science

BTEC Level 3 Extended Certificate

Students studying applied science have an opportunity to learn independently, carrying out active research and developing communication skills by delivering presentations and being active group members. Learners can also benefit from opportunities by selecting areas of interest for detailed study. By the end of the course students will be confident in reading scientific and technical texts, writing effectively, showing analytical skills, and be confident and proficient in a variety of practical scenarios - all skills which can be brought forward for use at university or in the workplace.

Entry requirements

Students should have a minimum of 5 GCSE grades (5 to 9) including science, maths and English language. Course requirements are a 5-5 in combined sciences.

Examination board:

BTEC

Find out more at:

[www.walton-ac.org.uk/
 sixth-form/courses/applied-science](http://www.walton-ac.org.uk/sixth-form/courses/applied-science)

Art, craft and design

A level

You will learn how to express your thoughts and ideas through the skilful manipulation of materials. You will explore art concepts through a variety of media and formats including drawing, painting, printmaking, 3D sculpture, and photography. You will produce work that meets the requirements of four assessment objectives that are similar to those of the GCSE art course. Recording ideas through photography, mark making and written annotation. Developing ideas through refining and reviewing your work and through investigating links with other practitioners, analysing and annotating your work throughout. Refining your work through experimentation with a range of techniques and media.

Entry requirements

Minimum grade 5 in GCSE art

Examination board:

AQA

Find out more at:

[www.walton-ac.org.uk/
 sixth-form/courses/art-and-design](http://www.walton-ac.org.uk/sixth-form/courses/art-and-design)

Biology

A level

Biology is the study of life and incorporates a wide variety of exciting subject areas, ranging from molecular biology to the study of ecosystems, from genetics to disease. The A level course builds on knowledge, understanding and practical skills developed during GCSE science. The course involves a mixture of scientific method, problem solving, practical skills and socially relevant content. It also enables students to develop the essential skills of synoptic essay writing, which is an aspect of modern education highlighted as missing by the major universities.

Entry requirements

Minimum of GCSE grade 7 in biology and grade 6 in both GCSE chemistry and physics or 7-7 in combined science, grade 6 GCSE maths

Examination board:

AQA

Find out more at:

[www.walton-ac.org.uk/
 sixth-form/courses/biology](http://www.walton-ac.org.uk/sixth-form/courses/biology)



Business

BTEC Level 3 Extended Certificate

This course is for students who are interested in learning about the business sector alongside other fields of study, with a view to progressing to a wide range of higher education courses, not necessarily in business-related subjects. It is designed to be taken as part of a programme of study that includes other appropriate BTEC Nationals or A levels. Students benefit from experiencing real life businesses through visits, guest speakers and 'live' assignment briefs from local businesses. Learners should have a keen interest in the world of business. They will benefit from having relevant work experience or part-time employment to complement their studies.

Entry requirements

Grade 6 GCSE maths, grade 6 GCSE English

Examination board:

Pearson

Find out more at:

[www.walton-ac.org.uk/
sixth-form/courses/business](http://www.walton-ac.org.uk/sixth-form/courses/business)

Chemistry

AS/A level

Chemistry has one of the highest values of any A level. It commands universal respect among universities and employers. Whether you want a career in medicine or industry, chemistry provides a great platform for study in higher education. Chemists are seen as great innovators and problem solvers. There are more chemistry graduates within the 'square mile' in London's financial area than any other discipline.

Entry requirements

Minimum of grade 7 GCSE chemistry and grade 6 in both GCSE biology and physics or 7-7 in combined science, as well as at least a 6 grade in maths

Examination board:

AQA

Find out more at:

[www.walton-ac.org.uk/
sixth-form/courses/chemistry](http://www.walton-ac.org.uk/sixth-form/courses/chemistry)

Children's play, learning and development (CPLD)

BTEC Level 3 Extended Certificate

This is an exciting subject area looking at three different mandatory units and one optional unit. It is for students who are interested in learning about the early years sector as part of a balanced study programme. The course will support you to look at different aspects of child development, play and learning as well as essential skills and competencies required to work in the area of early years education. Students will have the opportunity to plan and prepare and attend different vocational settings as part of their developing knowledge and experience of working in the early years sector. Students completing their Level 3 studies have continued onto university to study children's nursing, radiography and teaching, plus many more subjects.

Entry requirements

Five GCSEs at grades 4-9 including English language and maths

Examination board:

Pearson

Find out more at:

[www.walton-ac.org.uk/
sixth-form/courses/childrens-
play-learning-and-development](http://www.walton-ac.org.uk/sixth-form/courses/childrens-play-learning-and-development)

Criminology

Level 3 Applied Diploma

An understanding of criminology is relevant to many job roles within the criminal justice sector, including police officers, probation and prison officers, and social workers. With their critical thinking, analytical and communication skills, criminology graduates are also attractive to employers outside the criminal justice sector in areas such as social research and politics. This course has a strong focus on applied learning and students will acquire knowledge of the criminal justice system in purposeful contexts.

Entry requirements

A minimum of grade 6 or above in English and another supporting Level 2/GCSE qualification such as philosophy or history

Examination board:

WJEC

Find out more at:

[www.walton-ac.org.uk/
sixth-form/courses/criminology](http://www.walton-ac.org.uk/sixth-form/courses/criminology)

Dance

A level

Studying A level dance is a thrilling venture that amalgamates the art of movement with the cultivation of invaluable life skills. This course delves into diverse dance styles, choreography, and dance history, offering a holistic education. Beyond the stage, the performing arts industry stands as a beacon of opportunity, imparting transferable skills like creativity, teamwork, and discipline. A level dance serves as a gateway to this dynamic world, equipping students not only with dance proficiency but also with the tools needed to excel in diverse professional realms. Join us on a journey where artistic passion converges with practical skills, sharing a future of boundless possibilities.

Entry requirements

Five grades 5-9 including maths and English. Merit/grade 6 or above in one or more of the following BTEC/GCSE subjects: music, dance or drama.

Examination board:

AQA

Find out more at:

[www.walton-ac.org.uk/
sixth-form/courses/dance](http://www.walton-ac.org.uk/sixth-form/courses/dance)

Drama

A level

Taking A level drama offers numerous benefits. Firstly, it fosters creativity and self-expression, allowing students to explore various forms of dramatic arts, from acting to directing and scriptwriting. Secondly, it enhances communication and teamwork skills as students collaborate with peers on productions, improving their ability to express ideas effectively. Additionally, A level drama encourages critical thinking by analysing texts, performances, and the socio-cultural context of plays. It also builds confidence and public speaking abilities, valuable in any career. Lastly, it provides a holistic education, nurturing empathy and cultural awareness. A level drama equips students with versatile skills for personal growth and diverse career opportunities in the arts and beyond.

Entry requirements

Five grades 5-9 including maths and English. Merit/grade 6 or above in one or more of the following BTEC/GCSE subjects: music, dance or drama.

Examination board:

AQA

Find out more at:

[www.walton-ac.org.uk/
sixth-form/courses/drama](http://www.walton-ac.org.uk/sixth-form/courses/drama)



View our courses online
[www.walton-ac.org.uk/
 sixth-form/courses](http://www.walton-ac.org.uk/sixth-form/courses)



English literature

A level

Studying English literature will allow you to study a plethora of thought-provoking material. It will give you the opportunity to discuss themes, characters and narrative structures of texts whilst reflecting on what this reveals about human nature and the world we live in. Many of the texts you study will come from different periods of history. However, the universal concepts and ideas will capture your imagination and help you develop your own interpretations of seminal literary works.

Entry requirements

Grade 6 and above in GCSE English language and English literature

Examination board:

AQA

Find out more at:

[www.walton-ac.org.uk/
 sixth-form/courses/english-literature](http://www.walton-ac.org.uk/sixth-form/courses/english-literature)

Food science and nutrition

WJEC Level 3 Diploma

An understanding of food science and nutrition is relevant to many industries and job roles. Care providers and nutritionists in hospitals use this knowledge, as do sports coaches and fitness instructors. Hotels and restaurants, food manufacturers and government agencies also use this understanding to develop menus, food products and policies that support healthy eating initiatives. This qualification offers you a chance to develop both practical and academic skills through applied learning, for example, through the acquisition of knowledge and understanding in purposeful, work-related contexts, linked to industry.

Entry requirements

Grade 6 GCSE food preparation and nutrition, grade 6 GCSE maths and English

Examination board:

WJEC

Find out more at:

[www.walton-ac.org.uk/
 sixth-form/courses/food-science-and-nutrition](http://www.walton-ac.org.uk/sixth-form/courses/food-science-and-nutrition)

Geography

A level

Geography is one of the most diverse subjects available for A level due to the wide ranging topics areas studied within human, physical and environmental geographies. Geography would be the ideal course if you enjoy learning about people and their societies, economies, cultures and the physical environment. The two-year A level course also states that students must undertake a minimum of four days of fieldwork.

Entry requirements

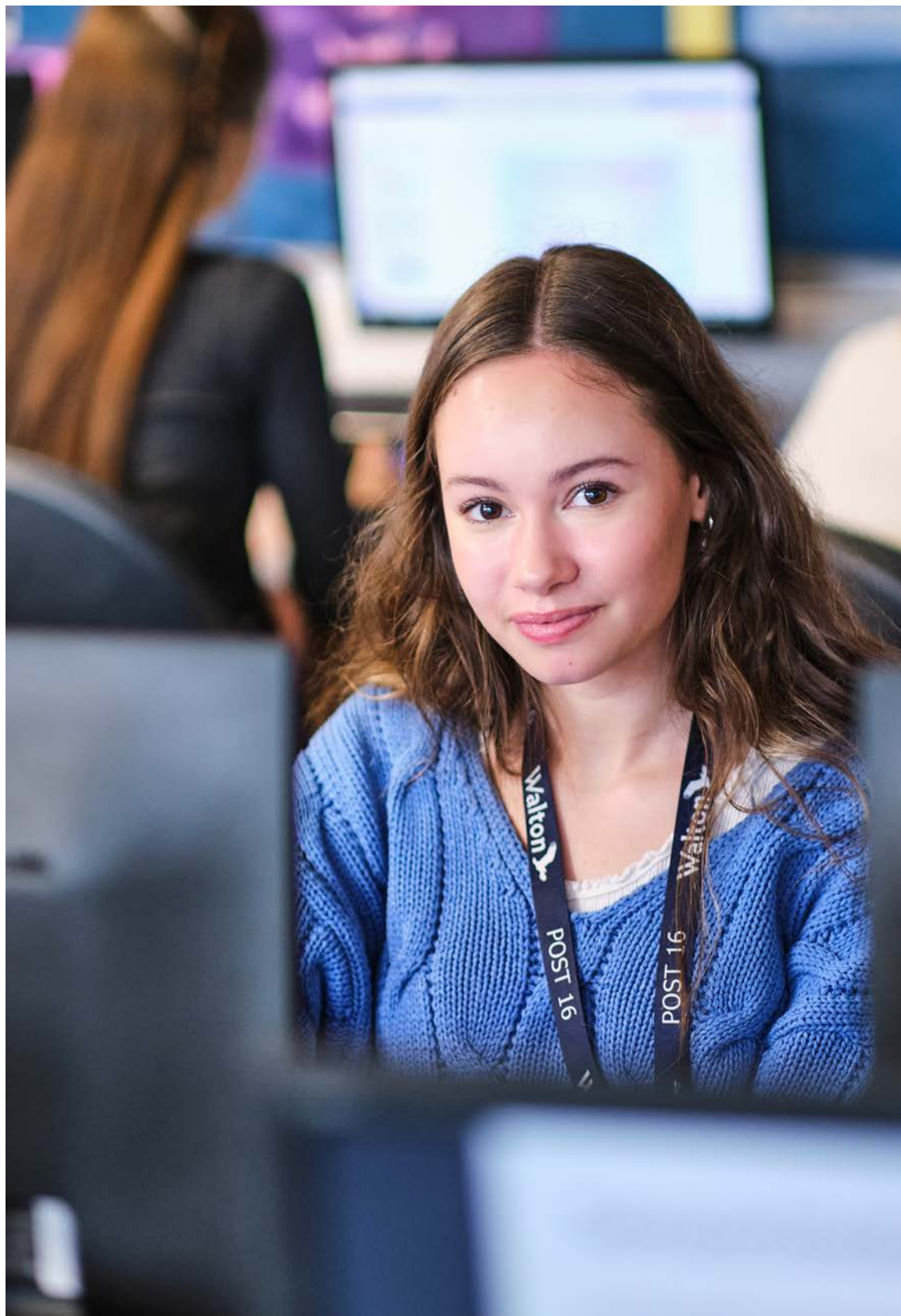
Grade 6 or above GCSE geography

Examination board:

Edexcel

Find out more at:

[www.walton-ac.org.uk/
 sixth-form/courses/geography](http://www.walton-ac.org.uk/sixth-form/courses/geography)



View our courses online
[www.walton-ac.org.uk/
 sixth-form/courses](http://www.walton-ac.org.uk/sixth-form/courses)



Health and social care

BTEC Level 3 Extended Certificate

This is an exciting subject area looking at three different mandatory units and one optional unit. It is for students who are interested in learning about the health and social care sector as part of a balanced study programme. The course will support you to look at different aspects of life and human development as well as essential skills and competencies required to work in the vast area of health and social care. There are over 350 career opportunities in the NHS alone. Social care is a fast developing industry area. Many students continue onto further study at university - past degree courses include, occupational therapy, physiotherapy, nursing, midwifery, social work and teaching.

Entry requirements

Five GCSEs at grades 4-9 including English language and maths

Examination board:

Pearson

Find out more at:

[www.walton-ac.org.uk/
 sixth-form/courses/health-and-social-care-extended-certificate](http://www.walton-ac.org.uk/sixth-form/courses/health-and-social-care-extended-certificate)

History

A level

The course has been designed to help students understand the value and significance of world events in the past. In the process you will gain a deeper understanding of social, cultural, religious and ethnic diversity.

Entry requirements

A minimum of at least grade 6 GCSE history and English

Examination board:

AQA

Find out more at:

[www.walton-ac.org.uk/
 sixth-form/courses/history](http://www.walton-ac.org.uk/sixth-form/courses/history)

Information technology

BTEC Level 3 National Extended Certificate

This qualification is designed for learners who are interested in an introduction to the study of creating IT systems to manage and share information - alongside other fields of study - with a view to progressing to a wide range of higher education courses, not necessarily in IT. The course is equivalent to one A level. There are 360 guided learning hours (GLH) for the completion of the qualification. Lessons will be a mixture of practical and classroom based theory lessons.

Entry requirements

A minimum of five GCSEs at grade 5-9 including maths and English

Examination board:

Pearson

Find out more at:

[www.walton-ac.org.uk/
 sixth-form/courses/ict](http://www.walton-ac.org.uk/sixth-form/courses/ict)

View our courses online
[www.walton-ac.org.uk/
sixth-form/courses](http://www.walton-ac.org.uk/sixth-form/courses)



Languages

A level

At Walton Academy we offer A level language qualifications in French and Spanish. Our A level language programmes are a gateway to a world of opportunities. With expert teaching, interactive learning, and a supportive community, we'll help you excel in your exams and explore the rich culture of the French and Spanish speaking world. Join us on this exciting journey to fluency and global citizenship. Beyond the language itself, our course will boost your critical thinking, cultural awareness, and communication abilities – skills that are super handy in today's globalised world. Whether you dream of working internationally, travelling the world, or just want to be more culturally savvy, A level languages is your ticket to an exciting journey.

Entry requirements

Grade 6 in relevant language at GCSE

Examination board:

AQA

Find out more at:

www.walton-ac.org.uk/sixth-form/courses/languages

Maths

A level

Maths is one of the biggest facilitating subjects and it is essential for many higher education courses and careers. The overarching themes of the course are mathematical argument, language and proof, mathematical problem solving and mathematical modelling.

Entry requirements

Minimum grade 6 GCSE maths

Examination board:

AQA

Find out more at:

www.walton-ac.org.uk/sixth-form/courses/maths

Philosophy and ethics

A level

Philosophy and ethics is a subject that by its nature requires students to consider individual, moral, ethical, social, cultural and contemporary issues. The subject is suitable for anyone who enjoys thinking critically, playing with abstract concepts and challenging received wisdom. Philosophers ask fundamental questions about our own nature, and of the world we live in. It is a challenging and exciting process, helping you to grow and develop intellectually while developing valuable and transferable skills in analysis, imagination, problem solving and communication. Highly regarded by universities, the subject involves a study of philosophical, theological and ethical theories which underpin and structure our world today.

Entry requirements

Grade 6 or above in GCSE philosophy and ethics plus a minimum grade 5 in GCSE English

Examination board:

AQA

Find out more at:

www.walton-ac.org.uk/sixth-form/courses/philosophy-ethics

Photography

A level

You will learn how to express your thoughts and ideas through the skilful manipulation of photographic media. You will learn about a variety of photography genres and art movements to help you to develop your own themes and projects. You will learn how to use both digital and film cameras, working in both the Photoshop suite and the dark room.

Entry requirements

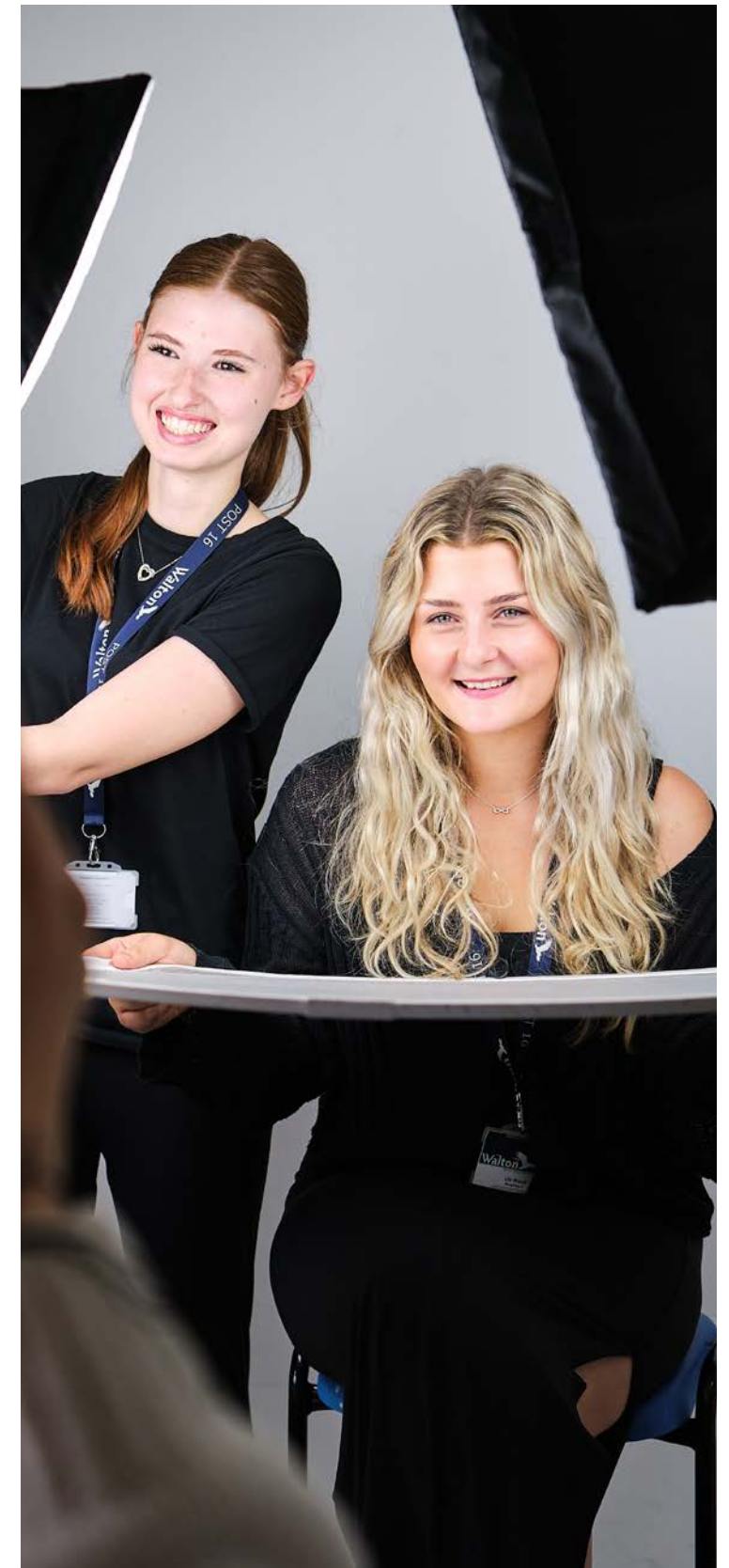
Grade 6 or above in GCSE photography and grade 5 or above in GCSE maths and English. Alternatively, an interview and portfolio presentation will be offered to students who have not undertaken GCSE photography.

Examination board:

AQA

Find out more at:

www.walton-ac.org.uk/sixth-form/courses/photography





Walton teachers are so supportive.

View our courses online
www.walton-ac.org.uk/sixth-form/courses



Physics

A level

Physics has one of the highest values of any A level. It commands universal respect among universities and employers. Physics will help you to build up your problem solving, research and analytical skills. With these skills you will be able to test out new ideas plus question and investigate other people's theories, which is useful for any kind of job that involves research or debate. Physicists are in big demand, whatever your career, a qualification in physics will open doors. Physics is more than a subject - it trains your brain to think beyond boundaries.

Entry requirements

Grade 7 in GCSE physics with a grade 6 in both GCSE biology and GCSE chemistry or a grade 7-7 in GCSE combined science and grade 6 in maths

Examination board:

AQA

Find out more at:

www.walton-ac.org.uk/sixth-form/courses/physics

Psychology

A level

A level psychology empowers students to think critically, analyse data, and apply psychological concepts to everyday life. Whether you aspire to pursue a career in psychology, sociology, education, or any field that involves understanding human behaviour, this course equips you with the knowledge and skills to excel. Join us on a captivating journey into the human mind and behaviour with A level psychology. Your path to understanding the complexities of the human experience begins here.

Entry requirements

Grade 6 in maths and/or science

Examination board:

AQA

Find out more at:

www.walton-ac.org.uk/sixth-form/courses/psychology

Sociology

A level

A sociologist is someone concerned with understanding society in a disciplined way. They are somebody who examines the way we behave as humans and the impact our experiences and environment has upon us. It can be said that the first wisdom of sociology is this - things are not always as they seem. Sociologists dedicate their work to looking at the inequalities and injustices people face and explore the causes behind this.

Entry requirements

GCSE grade 5 in English, humanities and maths

Examination board:

OCR

Find out more at:

www.walton-ac.org.uk/sixth-form/courses/sociology/

Sport

BTEC Level 3 National Extended Certificate

The BTEC Level 3 National Extended Certificate in Sport is equivalent to one A level. There are 360 guided learning hours (GLH) for the completion of the qualification. Lessons will be a mixture of practical and classroom based theory lessons.

Entry requirements

Five GCSEs at grades 5-9

Examination board:

Pearson

Find out more at:

www.walton-ac.org.uk/sixth-form/courses/sport

Joining our Post 16 Centre

Entry requirements

If you wish to study A level or BTEC Level 3 qualifications with us, you will need to have achieved the minimum entry requirements in your chosen subjects at GCSE. These can be found for every subject in our A level course listing pages.

As a guide, you should have at least five GCSEs at grade 5 or above (including English and maths), plus the required grade in your chosen subjects.

Apply online

Apply for your place online by visiting www.walton-ac.org.uk/sixth-form/how-to-apply

Any questions?

Contact us at any time if you need help or support with your application to our sixth form.

Email:
enquiries@walton-ac.org.uk
Call us on **01476 563251**



We are proud to be part of Diverse Academies Trust

Across primary, secondary and special settings, we share a common mission to nurture curiosity, develop wellbeing and empower children and young people to go beyond their aspirations.

Together, we believe we can make a difference in our diverse communities, and in the lives of those who learn with us and work with us.

For more information, visit www.diverseacademies.org.uk

Walton Academy

Harlaxton Road, Grantham, Lincolnshire, NG31 7JR

Contact us

01476 563251

enquiries@walton-ac.org.uk

www.walton-ac.org.uk

Diverse Academies Trust (Old Hall Drive, Retford, Nottinghamshire, DN22 7EA; registered company number 07664012) is a not for profit charitable trust with exempt charity status, registered in England and Wales.