

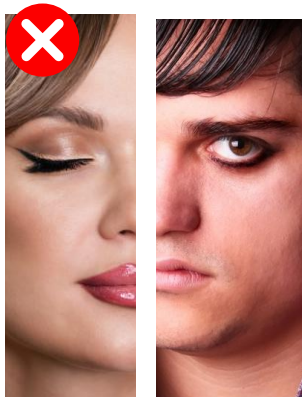
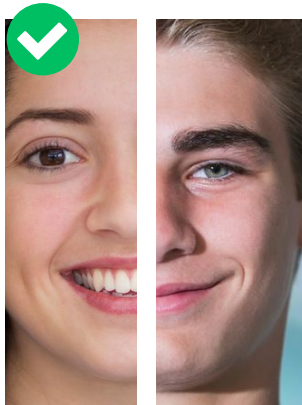
UNIFORM EXPECTATIONS

This guide focuses on clarifying expectations around earrings and piercings, make-up, and footwear to ensure consistency across our school community. Students who do not meet these expectations will be challenged in line with our school policy.

Make-up

Correct: Subtle or no make-up

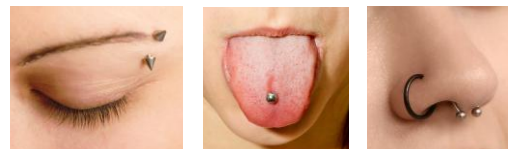
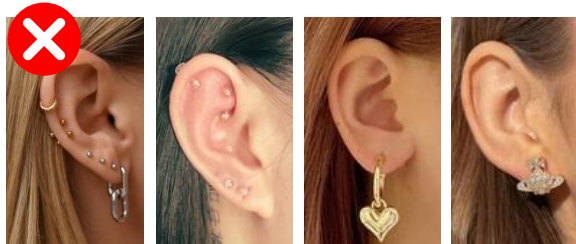
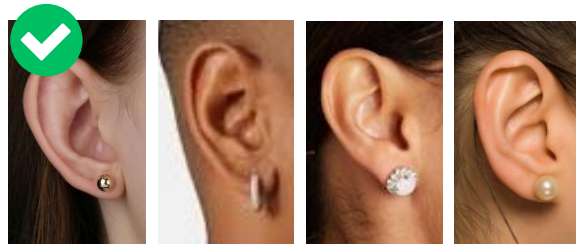
Incorrect: Highly visible make-up (lipstick, eye liner, thick mascara, false eye lashes).



Earrings and piercings

Correct: One pair of stud or hoop earrings in the lower ear lobe of a sensible size.

Incorrect: Large earrings that hang below the lobe or any other piercings including plastic retainers.



Shoes

Correct: Formal, black, hard wearing school shoes with a flat sole or a low heel.

Incorrect: Branded trainers, boots or other footwear

